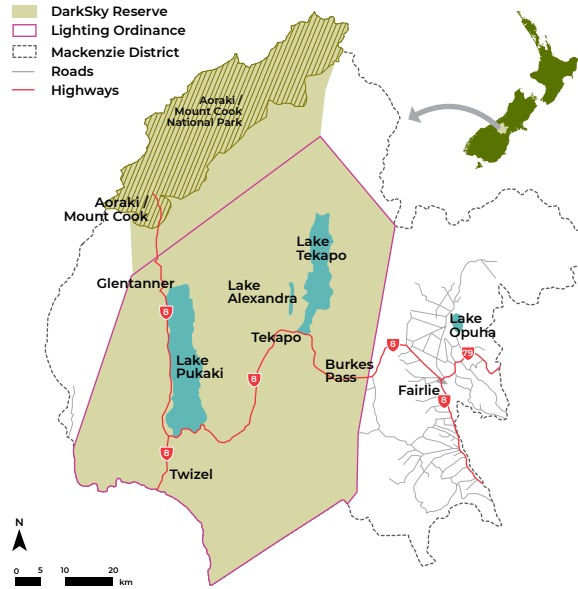




Our
Dark Sky
is worth
protecting.

darkskyreserve.org.nz

Aoraki Mackenzie International Dark Sky Reserve map



Recognition of the Aoraki Mackenzie area as an International Dark Sky Reserve resulted from the dreams and hard work of many individuals and organisations, both within the local area and from around New Zealand. The application document was formally presented to the International Dark-Sky Association with the support of The Mackenzie District Council, The Department of Conservation, The University of Canterbury Mt John Observatory, and the Royal Astronomical Society of New Zealand.

The application document can be downloaded from:

<http://www.saps.canterbury.ac.nz/starlight/index.shtml> (34MB PDF)
https://www.darksky.org/wp-content/uploads/2018/03/Aoraki_Mackenzie_IDSP_Application.pdf



Aoraki Mackenzie International Dark Sky Reserve (AMIDSR)

In June 2012 over 4367 square kilometres of New Zealand's South Island were proclaimed as an International Dark Sky Reserve, making it the largest in the world. The Aoraki Mackenzie International Dark Sky Reserve (IDSR), comprised of the Aoraki/Mt. Cook National Park and the Mackenzie Basin, is the third such dark sky reserve in the world.

International Dark-Sky Association's Executive Director Bob Parks remarks, "The new reserve is coming in at a 'Gold' level status. That means the skies there are almost totally free from light pollution. To put it simply, it is one of the best stargazing sites on Earth."

The reserve recognizes that the night sky has played a critical role in the area's history. As its first residents, the Maori used the night sky not only to navigate to the island but also integrated astronomy and star lore into their culture and daily lives. The reserve seeks to honour that history by keeping the night sky as a protected and integral part of the area's natural and cultural landscape. It is a perfect place to protect and honour those traditions as the IDSR's Mackenzie Basin has the clearest, darkest and the most spectacular night sky in New Zealand.

Find out more darkskyreserve.org.nz

International Dark Sky Places

What can you do?

Why?

The International Dark-Sky Association (IDA) takes great pride in its efforts to protect our natural nightscapes.

Night sky protection however starts locally, with a dedicated group of citizens. Through our International Dark Sky Places programme, IDA and its partners certify locations with exceptional nightscapes as International Dark Sky Communities (IDSC), International Dark Sky Parks (IDSP), or International Dark Sky Reserves (IDSR).

These locations serve as reminders that with quality outdoor lighting, the extraordinary wonders of the nighttime sky and night environment are just as much a part of our lifestyle and history as are the daylight hours. In fact, without the inspiration from night sky objects, much of the world's history, art, culture, music, and literature would not have been created. IDSPlaces celebrate this rich heritage with innovative outreach programmes meant to inspire others to cherish the sky.

The A.M.I.D.S.R is a multifunctional one, in which the landscape is of outstanding beauty, significant biodiversity and has geologically important features. Night sky tourism is not only a significant source of income for members of the local population, but is woven into local culture in providing a point of reflection on the night sky for local people and visitors in understanding and experiencing the night sky.

The Dark Sky Reserve Concept promotes starlight destinations as places where history, science, aesthetics and spirituality may be interpreted for members of the public alongside viewing of the night sky.



Use "full cutoff" fixtures, which means that no light is emitted at or above the horizontal. Concentrate fixtures only where needed. Choose fixtures that can be aimed. Avoid glare. Glare compromises safety, as it can render an attacker or intruder invisible. It is often caused by an unshielded source, such as a fixture where the bulb is visible when viewing straight on.



Use lower wattage bulbs. The dark adapted eye can best see at night when there is uniformity of illumination. A bright light against a dark background causes pupil contraction, so the dark background beyond the bright light is invisible. When choosing lighting avoid harsh or blue white lamps. Choose "warm white" or lamps rated at 270K or less.



Assess your requirements. Determine if or where you really need light. Don't use light as "decoration" AND remember to close the curtains any time the lights are on.



Use sensors to provide security & minimise outside lighting. Look at timers so you only use lights when you really need them. Direct light where it is needed and aimed towards the ground.

There are at least nine reasons to reduce light pollution and to protect the natural night sky. They go beyond nature conservation to touch upon appropriate design and land development control policies.

- To preserve the ecological integrity of natural environments.
- To ensure the full enjoyment of a wilderness experience.
- To appreciate the integrity, character and beauty of rural landscapes.
- To protect and present the commemorative integrity (authenticity) of cultural sites.
- To preserve traditions that relate to celestial mythologies, navigation and other cultural aspects.
- To protect human health, both medical and psychological.
- To contribute to energy efficiency.
- To benefit scientific and amateur astronomy and the right to enjoy the night sky.
- To improve personal security through non-glare lighting in urban areas.

Who is who



International Dark Sky Association
darksky.org

Starlight Festival
starlightfestival.org.nz

Mackenzie District Council
mackenzie.govt.nz

Dark Sky Project
darkskyproject.co.nz

Silver River Stargazing
silverriverstargazing.com

Tekapo Hot Springs Stargazing
tekapostargazing.co.nz

Mt John Observatory
phys.canterbury.ac.nz/research/mt_john

Fraser Gunn Photography
frasergunn.co.nz

Mt Cook Retreat
mtcookretreat.nz

Lakestone Lodge
lakestonelodge.co.nz

Tekapo Starlight
tekapostarlight.co.nz

RASNZ Dark Skies
rasnz.org.nz/groups-and-sections/ds-home

The Hermitage - Big Sky Stargazing
hermitage.co.nz/en/the-sir-edmund-hillary-alpine-centre/big-sky-stargazing

Department of Conservation Aoraki Mt Cook
doc.govt.nz/parks-and-recreation/national-parks/aoraki-mount-cook